

A QUEER LITERARY JOURNAL
Chroma

Prose • Poetry • Art • Issue 10 • Winter 2009



A QUEER LITERARY JOURNAL
Chroma
Issue 10 • Winter 2009

PO Box 44655
London N16 0WQ
+44 20 7193 7642
chroma@chromajournal.co.uk

Editor
SHAUN LEVIN

Poetry Editor
SARADHA SOOBRAYEN

Commissioning Editors
**ANDRÁS GEREVICH, SOPHIE MAYER,
MICHAEL UPTON**

Designer
RAFFAELE TEO

COVER

Front Cover: Jonathan Dredge, *Looking Forward*

Back Cover: Irit Rabinowits, *Arnebath*

This issue is dedicated to Berta Freistadt (1942 - 2009)

Chroma (ISSN 1744-7801) is published twice a year with the financial support of Arts Council England, London.

Subscriptions are £13.00 a year in the UK, £16.00 elsewhere (cheques payable to "Chroma").

©2009 Poetry, prose, artwork, and design rights return to the artists upon publication. No part of this publication may be duplicated without the permission of the individual artists or the editors.

Opinions expressed in *Chroma* are not necessarily those of the editors or of Queer Writers and Poets. Manuscripts submitted to *Chroma* must be original typescript or clear photocopies. Please refer to the submission guidelines on the website before sending in work.

Letters to the editor are welcome. Please send them to the address above, or to editor@chromajournal.co.uk



www.chromajournal.co.uk

PO Box 44655
London N16 0WQ
+44 20 7193 7642
chroma@chromajournal.co.uk

Editor
SHAUN LEVIN

Poetry Editor
SARADHA SOOBRAYEN

Commissioning Editors
**ANDRÁS GEREVICH, SOPHIE MAYER,
MICHAEL UPTON**

Designer
RAFFAELE TEO

COVER

Front Cover: Jonathan Dredge, *Looking Forward*
Back Cover: Irit Rabinowits, *Amebath*

This issue is dedicated to Berta Freistadt (1942 - 2009)

Chroma (ISSN 1744-7801) is published twice a year with the financial support of Arts Council England, London.

Subscriptions are £13.00 a year in the UK, £16.00 elsewhere (cheques payable to "Chroma").

©2009 Poetry, prose, artwork, and design rights return to the artists upon publication. No part of this publication may be duplicated without the permission of the individual artists or the editors.

Opinions expressed in *Chroma* are not necessarily those of the editors or of Queer Writers and Poets. Manuscripts submitted to *Chroma* must be original typescript or clear photocopies. Please refer to the submission guidelines on the website before sending in work.

Letters to the editor are welcome. Please send them to the address above, or to editor@chromajournal.co.uk

www.chromajournal.co.uk

printed in Kent by Harrisons, 01689 880358

Chroma: Body

Prose

- | | | |
|----|---|---------------------------------|
| 05 | Sitting in Circles with Rich White Girls | CHAD GOLLER-SOJOURNER |
| 11 | In Your Flesh
Translated from the Spanish by Sophie Mayer | ISABEL FRANCO |
| 12 | Making Tea in the Dark | ERIC KARL ANDERSON |
| 17 | Sugar Index | BEATRICE HITCHMAN |
| 21 | 41 Frags | NATHAN KUZACK |
| 28 | Gravity | ANEIL RALLIN |
| 32 | Schizzi Rozzi | MARIA JASTRZĘBSKA |
| 34 | An Open Society
Translated from the Slovene by Rawley Grau | BORIS PINTAR |
| 38 | Brown Boy Transversations | M. ANA BOLICA & MISSTER SCRATCH |
| 42 | Swallowing the Wind
Translated from the Croatian by Christine Baker | DJURDJA KNEZEVIC |
| 45 | The Writer | MAIRE COONEY |
| 48 | B Crush | MOA MAGNUSSON |
| 55 | Together | MATILDA BERNSTEIN SYCAMORE |

Poetry

- | | | |
|----|---|---------------------|
| 04 | Kiss | CHAR MARCH |
| 07 | Human Bondage | CHRISTOPHER GASKINS |
| 09 | Sestina | MAITREYABANDHU |
| 16 | Wood Shop | BRENT ARMENDINGER |
| 20 | Translations, & Other Tellings | K. BRADFORD |
| 26 | Digger | AILEEN PENNER |
| 30 | The Quietening | SWITHUN COOPER |
| 31 | In Justice Square | ROBERT HAMBERGER |
| 37 | My Wall in Kilburn | BERTA FREISTADT |
| 51 | Empathy with the Cutter | GINNA WILKERSON |

Art

- | | | |
|----|--------------------------------------|--------------------|
| 08 | The First Time Is the Hardest | SAMUEL HODGE |
| 10 | Vanessa 01 | ZIV GIL KAZENSTEIN |
| 27 | Prostration 1 | NICK FIELD |
| 41 | Boys 2 | ALEX GRACE |
| 52 | Untitled | J. AIDEN SIMON |
| 53 | Untitled | J. AIDEN SIMON |
| 54 | Untitled, 2007 | LUIGI FILADORO |
| 58 | Finding Manhood, 2004 | ELI VANDENBERG |

59 Biographies

and her survivors are held, the survivors who put such a brave face on their loss: *It had to be this way! What can you do? The end comes to all of us sooner or later! At least now she's not suffering. She's in a better place. To everything there is a season...* Thus the survivors try to cheer up the people who have come to cheer them up, and to create the atmosphere of a birth. The heavenly birth of our mother. We sold her brain to science; thus Mother continues to live on.

It was a sunny spring Sunday, as the meteorologists had predicted. The snowdrops our mother so loved had only just come into bloom. She had a beautiful funeral, which was attended by many. Sunglasses

hid the tears. At the open grave, the priest delivered a passionate eulogy: *You gave them life, and they took yours from you.* As the end was approaching, Mother had been unable to eat solid food. She liked creamy yogurt. We fed it to her with a little spoon. ■

Originally published as "Odpriča družba" in the author's short-story collection *Družinske parabole (Family Parables)* (Ljubljana: SKUC, 2005). *Family Parables* will be published this year in English by Talisman House.

Berta Freistadt My Wall in Kilburn

*...you must not destroy its trees
wielding the axe against them
you may eat of them
but you must not cut them down
are the trees of the field human
to withdraw before you?*

There stands my little fig tree
one green fig, one tremulous
purple. There stands my apple tree
rosy fruit shy in the leaves.
Long leaders to be pruned
in august. Prune in winter
for growth, in summer for shape.
There lie my fragrant herbs
my leaning flowers.
This is my paradise
my Eden, my home
and all around, my boundary
in wood and brick and green
safely holds all. This winter
one panel to be replaced
two base boards, and the arris rail

*...only the trees you know
do not yield food
may be destroyed...*

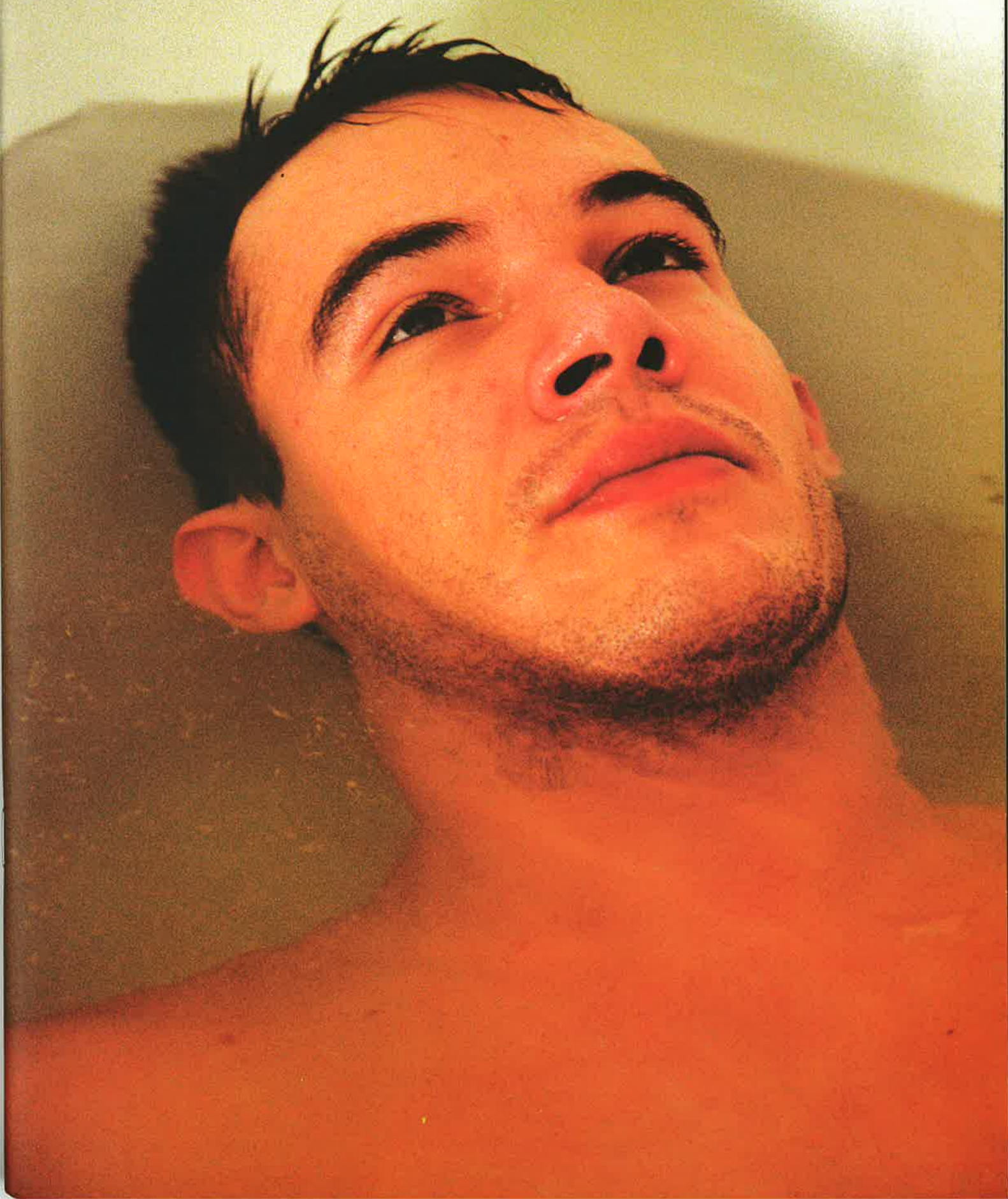
Sometime soon, one day
a little pointing to be done.

37

A QUEER LITERARY JOURNAL

Chroma

Stories • Poetry • Art • Issue 6 • Spring 2007



A QUEER LITERARY JOURNAL
Chroma
Issue 6 • Spring 2007

PO Box 44655
London N16 0WQ
+44 20 7193 7642
chroma@chromajournal.co.uk

Editor
SHAUN LEVIN

Poetry Editor
SARADHA SOOBRAYEN

Commissioning Editors
**ANDRÁS GEREVICH, SOPHIE MAYER,
ANDREW THEOPHILOU, MICHAEL UPTON**

Assistant Editors
PARISA EBRAHIMI, ANDRA SIMONS

Events Manager
DEEPNA SETHI

Designer
RAFFAELE TEO

COVER

Front: Kobi Israel, *kobi-israel.com*
Back: Sadie Lee, *Holly Woodlawn Dressing III, oil on canvas,*
48" x 36" (2007)

Chroma (ISSN 1744-7801) is published twice a year with the financial support of Arts Council England, London.

Subscriptions are £9.00 a year in the UK, £14.00 elsewhere (cheques payable to "Queer Writers and Poets").

©2007 Poetry, prose, artwork, and design rights return to the artists upon publication. No part of this publication may be duplicated without the permission of the individual artists or the editors.

Opinions expressed in *Chroma* are not necessarily those of the editors or of Queer Writers and Poets. Manuscripts submitted to *Chroma* must be original typescript or clear photocopies and will be returned only if accompanied by a stamped self-addressed envelope. Please refer to the submission guidelines on the website before sending in work.

Letters to the editor are welcome. Please send them to the address above, or to editor@chromajournal.co.uk.

www.chromajournal.co.uk

printed in Cornwall by Headland Printers, 01736 364 694